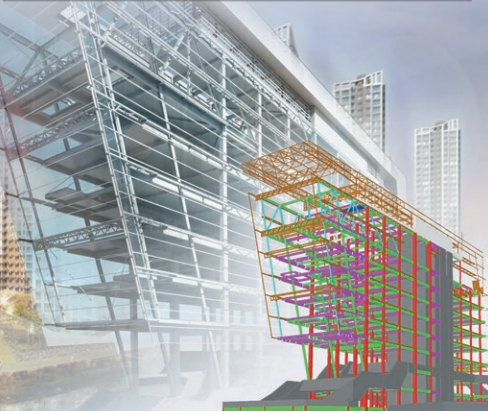
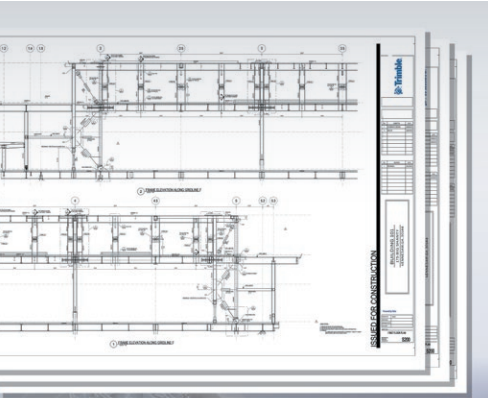


Protection Plans

Trimble Protected Plus



Managing your data across the project lifecycle has never been easier than planning functions with Building Construction Field Link Office and Field software. Combined layout and construction planning functions lower operational costs and increase productivity, providing a larger set of tools for users to leverage. Trimble's Building Construction software provides that critical performance you need to manage, process and create customer deliverables for all of your building and construction tasks using the Field Link software package. Because we understand that you want to continue to get the latest updates for your Field Link Office and Field Software beyond the factory warranty period, Trimble offers additional coverage with Trimble Protected Plus software protection plans.

Why Cover Your Software With a Protection Plan?

Adding a Trimble Protected Plus protection plan for your Field Link Office and Field software safeguards your data and your investment beyond the factory warranty, ensuring you can keep your projects generating revenue.

What is Covered?

After expiration of the original software factory warranty, our protection plans' cover:

- compatibility to added hardware
- access to ongoing software updates and enhancements
- fixes to known issues
- ability to relinquish and transfer the software license (if product allows):

In addition to covering Field Link Office and Field software, our plans also cover RealWorks (Base, Advanced, Modeler) and EdgeWise Field software and Field Points Office software. This means more predictable performance, productivity, and an increase in your software lifecycle.

Renew Your Trimble Coverage

Sign up today for your Trimble Protected Plus protection plan and look forward to lapse free coverage after your factory warranty has expired. If your software is not covered by a protection plan or factory warranty now, we also offer a great reinstatement option to keep your software current under a protection plan.

*Complete Trimble Protected Plus protection plan terms and conditions can be found online at:

Benefits

- Trimble Protected protection plans are the only plans designed specifically for buyers of Building Construction Field Link Office and Field software; they enhance and sustain your entire ownership experience with worry-free coverage
- A protection plan keeps your data workflow set running at the highest performance level possible
- You can streamline your software management by prorating all your plans into one single payment
- Your software plan becomes more valuable to your business when you add a Trimble Protected Plus protection plan; it is the only way to get the ongoing software updates from Trimble other than purchasing new software
- A protection plan prevents incompatibility issues between the software and the hardware in the field. A software protection plan will in most cases save you time and money

Trimble Protected Plus Provides the most up to date features and enhancements from Trimble.

SEE THE REVERSE FOR DETAILS.



Building Construction Field Link Office and Field Software

Software – Protection Plans



The Trimble Protected Promise

Trimble wants to keep you a satisfied protection plan customer for life so we guarantee to stand behind you and your software plan for as long as you own your coverage.

Below are the latest product updates. Trimble Protected Plus plans covers these updates and all previous updates.

Trimble Protected Plus Covers the following for Field Link Office and Field Software 6.0 (released : Q2/2021)	Trimble Protected Plus Covers the following for Field Link Office and Field Software 5.9 (released : Q1/2021)
Hardware Supported: <ul style="list-style-type: none">Total Stations: RTS573, RTS655, RTS673, RTS771, RTS773, RTS873, SPS610, SPS710, & RPT600GNSS: R8s & SPS986Scanner: X7Tablets: Trimble T10, T100 (now with scan module support) Panasonic FZ-M1 (no scan module support)	Hardware Supported: <ul style="list-style-type: none">Total Stations: RTS573, RTS655, RTS673, RTS771, RTS773, RTS873, SPS610, SPS710, & RPT600GNSS: R8s & SPS986Scanner: X7Tablets: Trimble T10*, T100 (no scan module support), Panasonic FZ-M1 (no scan module support)
New Features: <ul style="list-style-type: none">FieldLink SoftwareTransform, Scale and Rotate Model by Picking 2 Points on Two modelsGridLine Setup "Reference Elevation Toast" has been addedTID v4 implementation. Website login for improved securityIf a Layer Name already exists, the user now has the Option to replace itFilter Layers with PointsJobs/Imports/ExportsSupport up to current Navisworks Files in Field Link (NWD)Support SketchUp 2021 filesMeasureAllow Additional File Formats for 'Stake to Surface' (IFC and DXF)ScanningScan - Extract Detail/Density from selected RegionAbility to search for target when user taps somewhere near to target in station viewSupport X7 FW: R2.2.103Create TFL point from scan dataScan elevation data setThe T100 Tablet now supports scanning with the X7	New Features: <ul style="list-style-type: none">Points and lines created from floor should be placed under a layer named as floor nameUpdate Field Report branding and layoutUpdate Daily Layout Summary Report branding and layoutUpdate Surface Report branding and layoutMake saving of field reports photos user-friendlierUpdate Refine report as per latest version of Trimble PerspectiveMultiple Resection setups with Registration/RefinementRemove existing X7 workaround due to change in FW R2.1.202 "X7 - FieldLink loses station setup (aim north) after scan"Station View tilt correctionAnnotation and Markers ImprovementsCan a toast be provided if the floor extracted is minimal?Improvements to Inspection (5.9.0)Improvements to floor analysis (5.9.0)Last view option (station view) to be carry forward and should enter into the sameX7 component setup workflow refinement

* protection plan hardware support valid through 10/1/21

Contact your Trimble Distributor below for complete details

North America

Trimble Inc.
10368 Westmoor Drive
Westminster CO 80021
USA
+1-720 887-6100

Europe

Trimble Germany GmbH
Am Prime Parc 11
65479 Raunheim
GERMANY
+49-6142-2100-0 Phone
+49-6142-2100-140 Fax

Asia-Pacific

Trimble Navigation
Singapore PTE Limited
3 HarbourFront Place
#13-02 HarbourFront Tower Two
Singapore 099254
SINGAPORE
+65-6871-5878 Phone
+65-6871-5879 Fax

